

*December 2011*

## *"The Spirituality of Being Human"*

Many years ago, in Chicago, Arthur and I went to a learning session with Rabbi Adin Steinsaltz, whose most recent accomplishment was translating the Babylonian Talmud into Modern Hebrew. He made several controversial comments about the Jewish People. The one I found most interesting and that has been most helpful to me was, "we Jews are more proud of our sinners than our saints." I thought, "that was refreshing insight! I wanted to know more about this."

During my first year of Rabbinical School I met an interesting rabbi who had founded a drug and alcohol rehabilitation center, primarily for underserved Jews struggling with addiction. I also read his autobiographical book, "The Holy Thief." Before becoming a rabbi, this man had conned countless people out of millions of dollars, had gone to jail, encountered the prison chaplain, Rabbi Jonathan Omer Man and studied Torah while in prison. After being released from jail, he initially fell back into his old life, but, one day, before scamming another innocent person, he had an epiphany. He started shaking uncontrollably and realized that if he continued along this path, he would die. He became intensely sorry for the lives he had ruined, but there was no way he could make teshuvah -- no way he could make restitution or even begin to make things right.

With this legacy of guilt, and nearing 50, he began studying his way out of

the life he had created for himself. When he became a rabbi, he founded Beit Teshuvah, (House of Return), which now helps people in the greater Los Angeles community reclaim their lives by overcoming addiction. A man who used to steal people's lives from them, is now giving others their lives back.

Why am I telling you this story? Because it is profoundly important to our spiritual lives to realize that no matter where we are on our spiritual journey, we are all capable of change and tremendous spiritual growth -- despite our human shortcomings. To paraphrase Rabbi Samsom Raphael Hirsch, "The Torah does not attempt to hide the faults, errors and weaknesses of our Biblical heroes and heroines. Knowing about their faults and weaknesses does not detract from their spiritual greatness. It adds to their stature and makes their life stories even more helpful to us. If they had all been portrayed as models of perfection, we would have believed that they had been endowed with a higher nature not given to us to attain. Had they been presented to us free of human passions and inner conflicts, they would not be credible human beings that we could ever hope to emulate."

Last month we began our annual Torah reading cycle. We read the familiar story that while in Egypt, Abraham was afraid that if the Egyptians knew he was Sarah's

*(Continued on page 3)*

## December Schedule

**Shabbat Evening: 7:30 p.m.**

**There will not be a service held at the JCC this month.**

**Shabbat Morning: 9:00 a.m.**

**Sunday Minyan: 9:30 a.m.**

*You may now find Temple Events on our online calendar at [www.tbdrochester.org](http://www.tbdrochester.org); find out what is going on or submit a new event for the calendar. As always, you may also reach us by calling the office at 585-266-3223.*



*We are handicapped accessible and equipped with a hearing loop.*

**The mission of Temple Beth David** is to provide an environment where the concepts of community prayer, education, and service to the greater Jewish community are provided within the context of Conservative Judaism. We pride ourselves on being a friendly, participatory, egalitarian community, welcoming all to be a part of our synagogue family.

# News from the President

Martin Presberg martin.presberg@tbdrochester.org

585-794-3509

Writing a monthly bulletin article has been an ongoing challenge over the last two years. Now suddenly I find myself working on the last article of my term. Each month I have tried to think about what has happened at Temple in the last month, and usually there is a lot. There are Hebrew School classes and teen projects, there are services and kiddushes, there are holidays and fundraisers, but it is difficult to distill the day-to-day activities of our Temple into something 'worthy' of a bulletin article. How can I express the comfort of another plate of cholent, or the pride in seeing our children actively working on a craft project on a Sunday morning? The answer is: I cannot express these feelings or experiences in an article. I can only encourage everyone to participate and experience them first-hand.

This month we had our congregational meeting. The atmosphere was respectful and collaborative which is a testament to the Board's preparation, and it is a testament to the patience and flexibility of our community. A balanced budget was presented and

approved indicating that we are financially healthy despite serious, long-term concerns. The primary concern is our inability to grow membership to support the building and services that we are committed to providing. It may be necessary to change our location or consider closer collaboration with other synagogues in the long-term, but for now -- with the help of a very positive year from Bingo -- we are stable.

The recommended candidates for the Board of Trustees and Executive Committee were approved. There will be very little turn-over in synagogue leadership with all Board members and most Executive Committee members returning next year. Only the positions of President and VP, Finance and VP Administration are changing, but the replacements: Helen Kashtan, Judy Levy, and Bruce Kielar are bringing significant Temple leadership experience to their new roles.

This continuity is very positive. I expect that Temple will run smoothly in the next few years, and I am hopeful that there will be time and energy to

address strategic questions and opportunities as well. There is also a warning sign, however, in that recruitment for new Board members was difficult. I am hopeful that we will be able to find new leaders to both spread the work as well as maintain a flow of new ideas and perspectives on the work that we do.

Rabbi Berg's contract was renewed with appreciation for the tremendous amount of work that she does for the community.

And finally, the Cantorial Solutions Committee gave a preliminary report on their survey and their next steps.

I am hopeful that this community can work together to find solutions that will bring us together and enable us to grow. I encourage everyone to share your thoughts with the new Temple Leadership. I am also happy to participate in the conversation in my new role, congregant.

I thank everyone for the opportunity to serve as President. It has been an honor.

## Calling all Hanukkah Bakers!

**It's not too late to support our Troops! Call by Dec 9<sup>th</sup>**  
**If you would you like to:**

- **Send Handmade Hanukkah Cards**
- **Send Homemade Hanukkah Cookies or Baked Goods**
- **Send Personal Care Items**

Please contact Keith Freedman at [kdfreedy@aol.com](mailto:kdfreedy@aol.com) or 585-727-0038 to be sure your donations will be received in time to be shipped across the world to servicemen and women so grateful to be remembered.



# Rabbi's Desk, con't.

Rabbi Aviva Berg    rabbiavivaberg@gmail.com    585-319-4407

*(Continued from page 1)*

husband, they would murder him so that they could take his beautiful wife. Abraham asked Sarah to say she was his sister, instead of his wife. Either because of or in spite of this survival strategy, Sarah was taken to Pharaoh. Abraham was made fabulously wealthy. When God afflicted Pharaoh and he realized that Sarah was really Abraham's wife, Pharaoh was outraged over Abraham's deception and expelled both of them from Egypt.

Abraham doesn't come off well at all. He asked his wife to participate in a lie. He let the Egyptians carry her off to Pharaoh. He reaped enormous financial gains while she was held captive in Pharaoh's house.

Moses, also, is not perfect. He loses his temper at least three times that I can count in Shemot, (the Book of Exodus), and he pays a huge price for it. That doesn't negate the service he provided or the example he sets for us. It just makes him human.

Before I went to rabbinical school, I held rabbis to impossibly high standards. One word of frustrated lashon harah from our exhausted,

spread-too-thin rabbi blossomed in me, into a long period of distrust. I projected perfection on my mentoring rabbi in Rabbinical School. How dare he have any human shortcomings and be a rabbi!

I was guilty of distorting the reality of the human condition. The Torah, however, does not do this. It doesn't whitewash our spiritual role models. They don't need apologetics. They just need a little compassion, as do we all. Their stories reflect real feelings, and real conflicts. Many times they act beyond any human expectation. Sometimes they fall short.

I now understand Adin Steinsaltz' point on many levels. We can marvel at and appreciate great spiritual qualities in our leaders, but we learn a more complete truth about what it means to be human from their failings.

Here's where I'm going with all of this. At the Congregational Meeting last month, you, the Temple Beth David community, renewed my contract with an overwhelming vote of confidence. I am deeply grateful to you and honored to be asked to continue to be your rabbi. It is my deepest hope that you

voted for me knowing that I am human -- there are several occasions when I have not always held my temper in check, times that I have sometimes heavily relied on the rabbi support committee that you so graciously provided me, and that I continue to have much to learn about being your rabbi.

Abraham is my most direct spiritual ancestor. Like him, I am an immigrant. Like him, I will work harder than the average bear and if, God forbid, somebody kidnaps you, like poor Lot, I will help find you and bring you back no matter where you are! I will continue to work on finding ways to work for social and personal justice without scorching any earth.

Finally, I want you to know that Arthur is my husband, not my brother, and that you are always welcome in our home. Our tent, literally, is your tent.

L'Shalom,

Rabbi Aviva Berg

## December Office Hours



**Open Sundays  
December 4 and 18**

**9am - Noon and 1:00-5:00 pm**

**Monday - Friday    9:00am - 2:00pm**

Office Closed on the following  
days: December 11, 21-26



***Rabbi Berg  
always looks  
forward to  
hearing from  
you.***



**Contact information: 585-319-4407  
rabbiavivaberg@gmail.com**

## Sponsored Kiddushes

Have you considered sponsoring a kiddush or cholent in honor or in memory of a loved one?

- Regular Sponsored Kiddush \$72
- Sponsored Cholent \$18 (or both for \$90)

Sponsoring a kiddush or cholent helps to defray the costs involved in providing the delicious nosh we all enjoy after services. Call the office today if you would like to reserve a date.

- Dec. 17, Sponsored Cholent In Memory of Rabbi Laurence Skopitz, by Davida Bloom
- Farewell Kiddush, December 17 In Honor of Cantor Samuel Asher, generously sponsored by the TBD Community.

## The Young Family Shabbat

The Young Family Shabbat is service designed for families with children in 3rd grade and younger, including the littlest ones. All the major aspects of a Shabbat service are included through songs, movement and stories. Please join us in the social hall at 10:45 a.m. on the following dates:

December 31  
January 21  
February 25



that was easy:

## Go Green & Help Temple

Did you know?? STAPLES allows Temple to recycle up to 10 printer cartridges each month and receive \$2 each in Staples Rewards credit to use in purchasing office supplies? Please drop off your printer cartridges-- we will recycle them!

Thank you for your donations!



## Green Tip of the Month: Shipping Chanukkah Packages

by Karen Berger

Re-use packaging. When shipping packages to loved ones, try to reuse packaging and boxes that you already have. In addition, UPS, Mailboxes Etc., and others now take used packing peanuts and bubble wrap for re-use. Some will even take big pieces of styrofoam to break down into packing-size fill. Ask your local shipping store for a complete list of what packaging materials they take for re-use.

## Ongoing Tzedakah Opportunity!

Bring in a non-perishable food item for Jewish Family Services' food cupboard. All non-perishables are appreciated. No glass, please.



Sponsored by TBD Men's Club.

# Temple Beth David's December, 2011

## Lifelong Learning



- **Community and Connection:** Celebrate the First Night of Chanukah at Temple Beth David - Bring your menorah and candles and your appetite for good food, fun, and Jewish trivia.
- **Shabbat Learning:** Learning How to Put Our Money Where our Hearts Are: The Spiritual Energy of Money and Tzedakah

In Kislev (Nov. 27th - Dec. 26th) we will celebrate our festival of lights and religious freedom as well as explore the way Judaism has embraced tzedakah throughout history, from Biblical times to the present. We will marvel at how the mitzvah of tzedakah has transformed Jewish communities and enhanced the quality of life in civilizations throughout the world.

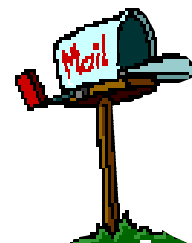
Community and Connection: On Tuesday, December 20th at 6:00 pm, come and celebrate the first night of Chanukah at Temple Beth David. We will light our menorahs together, sing songs, enjoy wonderful food and participate in an engaging and fun-filled Jewish trivia contest where everybody wins!

On Shabbat, December 10th, after kiddush in the Small Sanctuary, we will all participate in engaged discussion on the mitzvah of tzedakah and how it has been understood in Jewish culture, our mystical Tradition and in other societies. Rabbi Berg will facilitate our community learning.

### SNOW BIRD? LET US KNOW!

Heading south for the winter? Please let us know and save temple costly fees charged by the post office. (It will also ensure you get the bulletin while you are away!)

**Call 266-3223 OR email [office@tbdrochester.org](mailto:office@tbdrochester.org)**





# Donations Received October 1 to October 31, 2011

---

**Please Note:** Every effort is made to ensure accuracy in the Bulletin. Please let us know if an error is made and a correction will be noted in the next Bulletin.

**NOTE:** Minimum Donation is now just \$5.00 to send a greeting.

## **SHIVA CHEVRA FUND**

### ***In Memory of:***

**Shirley Frank**

Bernie & Sylvia Roth

Pam Rosen & Gary Cohen

## **TORAH REPAIR FUND**

### ***In Memory of:***

**Shirley Frank**

Ed Drexler & Sue Lubitow

Lawrence & Elaine Dolgoff

**Happy Birthday!**

**Maggie Kearney**

**Paul Halpern**

Pam Rosen & Gary Cohen

## **RABBI'S DISCRETIONARY FUND**

### ***In Memory of:***

**Blanche Saltzman**

**Lloyd B. Gottesman**

Daniel and Risa Saltzman

**Martin Etingoff**

Florence Etingoff

**Harold & Selma Kay**

Stephen & Marcia Kay

**Mildred Feinberg**

Harold & Rhea Feinberg

**Shirley Frank**

Essie Germanow

James and Elizabeth Snedeker

**In Appreciation of Support in Time of Mourning**

**Rabbi Aviva Berg**

William H. Packard

**Happy Birthday Wishes!**

**Marv Raphael**

Pam Rosen & Gary Cohen

## **DAVID SOLOMON FUND**

### ***In Memory of:***

**Shirley Frank**

Dennis & Kathleen Mele

Miss Sylvia Stiller

Florence Etingoff

**Minnie Dell**

Arthur & Ida Dell

**Arnold Fleisher**

Rae Fleisher

**Pearl Gallant**

Elaine Gallant

**Happy Anniversary Wishes!**

**Scott & Lori Davis**

Pam Rosen & Gary Cohen

**Happy Birthday Wishes!**

**Stan Gross**

**Matt Steinfeld**

**Kari Abramson**

Pam Rosen & Gary Cohen

**Get Well Wishes:**

**Bill Scheuermann**

Pam Rosen & Gary Cohen

**In Appreciation of all your hard work!**

**Pam Rosen & Gary Cohen**

Bernie & Sylvia Roth

## **MARSHA FISHMAN FUND**

### ***In Memory of:***

**Marsha Ivy Fishman**

**Anna G. Fishman**

**Rena Wolinsky**

Harold & Dolly Fishman

**Rachel Ojalvo**

Milt & Dorothy Smith

**Shirley Frank**

Dave & Florence Phillips

**Get Well Wishes:**

**Dolly Fishman**

Pam Rosen & Gary Cohen

## **TEMPLE RESIDENCE FUND**

**Get Well Wishes:**

**Rheva Kleinberg**

Sam & Roberta Kinel

**In Memory of:**

**Shirley Frank**

Marcia & Marvin Davis

## **MITZVAH / KIDDUSH FUND**

### ***In Memory of:***

**Pearl Gallant**

Annette Applebaum

**Get Well Wishes:**

**Irv Katz**

**Annette Strassman**

**Judy Eissenstat**

Lilly Sherman

**Get Well Wishes:**

**Irv Mindlin**

**Irv Katz**

**Annette Strassman**

Pam Rosen & Gary Cohen

**Irv Katz & Annette Strassman**

Fronie Hoffman

**Happy Anniversary Wishes!**

**Michael & Linda Horowitz**

Pam Rosen & Gary Cohen

**Happy Birthday Wishes!**

**Arianna Walker**

**Max Franklin**

Pam Rosen & Gary Cohen

## **LEV SHALEM HH PRAYER BOOKS**

### ***In Loving Memory of:***

**Irving Kessler**

Betty Ann Lansky

**Bernard & Martin Etingoff**

**David & Rose Kurlanshik**

Florence Etingoff

**Al Rosen**

Pam Rosen, Gary, Alex, and

Jordan Cohen

## **ETZ HAYIM PRAYER BOOKS**

### ***In Loving Memory of:***

**Marvin Morris**

Maureen Rosenbaum

## **CAPITAL IMPROVEMENT FUND**

**Happy Birthday Wishes!**

**Florence Phillips**

Pam Rosen & Gary Cohen

# News from Hebrew School

Marcy Berger, Principal

271-3549

## Important dates coming up!

Dec. 4 and Dec. 11: Come and support your Hebrew School! We will be selling Chanukah candles from Israel. They are \$10 a box and we will have many choices of colors available. Proceeds will go to a special event fund that will benefit the whole congregation.  
Jan. 21: 3<sup>rd</sup> Annual Havdalah Party 6:30- 8:30. We are looking for musicians who would like to help us enjoy a post-Shabbat evening. Please respond to **Marcy Berger** (marcy.berger@gmail.com).

We enjoyed a very busy October. We hosted some visiting teachers from Modi'in; we packed pickles; we started a new project—an inter-generational Torah commentary project—and we launched Jewish Book Month. Come down and visit us and see what we've posted about our various activities!



## Chanukkah is Coming Shop the Sisterhood Judaica Shop!

**Open During Hebrew School on  
Tuesday Afternoons 4pm - 6pm  
Sunday Mornings 9:30am - Noon**

**Come & See our Gift Ideas,  
Dreidels, Menorahs and more!**



## FBI Launches Child ID Mobile App

The Child ID App is currently available for use on iPhones and can be downloaded for free from the App Store on iTunes. The FBI is planning to expand the tool to other types of mobile devices in the near future.

The app allows users to send information—including pictures or other physical identifiers such as height and weight—to authorities with a few clicks. It also provides tips on keeping children safe and guidance on what to do in the first few crucial hours after a child goes missing.

The Federal Bureau of Investigation (FBI) has launched its first mobile application—the **Child ID App**. This free mobile app provides a convenient place to electronically store photos and vital information about one's children that can be easily provided to authorities if a child goes missing.



# All in the Family

To submit information, contact the Temple Office at 266-3223



## Happy Anniversary!

Bev and Jerald Engel

December 24

## December Birthdays

<u>Name</u>	<u>Date</u>	<u>Name</u>	<u>Date</u>
Annette Strassman	December 1	Keenan Bloom	December 25
Lori Davis	December 2	Ellen Hersch Duchano	December 26
Shira Sarai Presberg	December 3	Susan Drexler	December 27
Adele Gan	December 4	Neil Hyman	December 27
Stephen Papkin	December 5	Alex Cohen	December 29
Philip Katzman	December 11	Jordan Cohen	December 29
Sharon Alva	December 12	Scott Davis	December 29
Sara Steinfeld	December 16	Rabbi Aviva Berg	December 30
Ruth Seablom	December 18	Merrie Franklin	December 31
Shirley Grossman	December 22	Hanah Goldin	December 31

### Our Sincerest Condolences

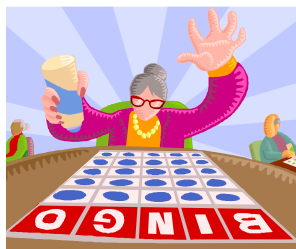
to the friends and family of:  
**Shirley Frank**

### Get Well Wishes going out to:

**Annette (Terry) Strassman**  
**Irv Katz**  
**Irv Mindlin**

## BINGO VOLUNTEERS NEEDED:

As the weather gets cold, our "snow birds" fly south for the winter. We really need your help, even if you only have a few hours a month to spare. We need help to keep our bingo game running through the winter months. We appreciate any help you can give, and we promise you will have fun! Contact Sylvia Roth at 266-6756 or the temple office at 266-3223.



**The MiSheh Berakh list will be cleared as of December 31, 2011.** Please feel free to call the office at 585-266-3233 or email [office@tbdrochester.org](mailto:office@tbdrochester.org) to add loved ones' names back to the list as needed after January 1, 2012.





IF IT DOESN'T  
SEEM RIGHT



Day or Night

**CALL 9 1 1**

Town residents and businesses working together

We Report

**ALL**

Suspicious Activity

[WWW.CRIMEREPORTS.COM/AGENCY/IRONDEQUOIT](http://WWW.CRIMEREPORTS.COM/AGENCY/IRONDEQUOIT)

## Shiva Chevra Volunteers Needed!

Please contact Merrie Franklin at [merrie\\_franklin@yahoo.com](mailto:merrie_franklin@yahoo.com) to have your name added to the list of congregants who are contacted to attend a minyan and support a family in mourning.

Thank you in advance for your support.

Brighton Memorial Chapel  
is proud to announce  
the acquisition of PARSKY'S.

*With this purchase, we will  
respectfully retain the files,  
pre-need arrangements, and  
caring history started by  
Alexander Parsky over 75 years ago.*



BRIGHTON MEMORIAL CHAPEL, INC.

*Rochester's Jewish Funeral Home*

ESTABLISHING A NEW TRADITION



3325 Winton Road South,  
Rochester, NY 14623

**585-427-8520**

[www.BrightonMemorialChapel.com](http://www.BrightonMemorialChapel.com)

Jarrod M. Krieger, owner and 4th generation Rochesterian

**Always Safe Heating**  
and appliance repair

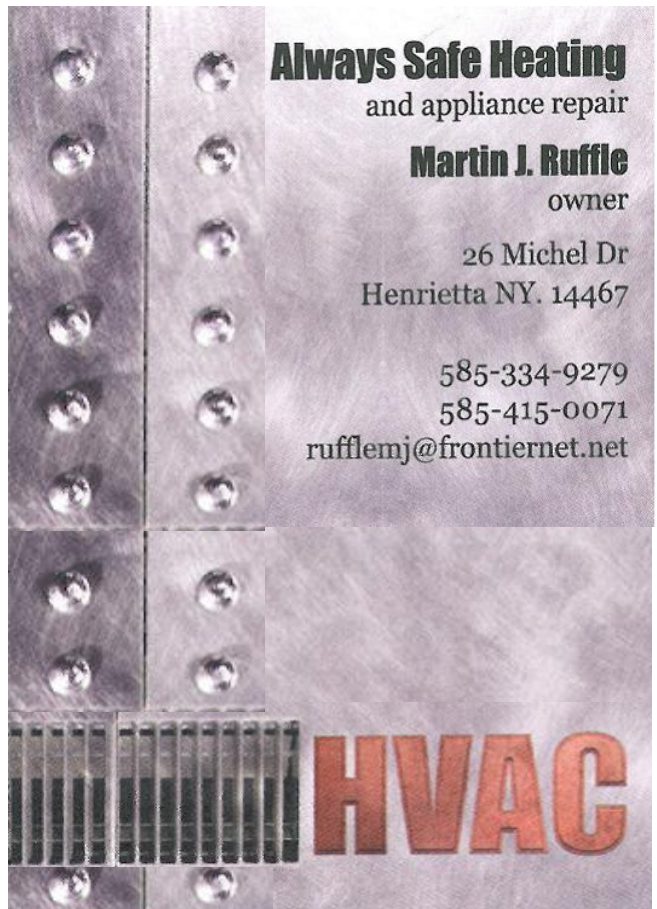
**Martin J. Ruffle**  
owner

26 Michel Dr  
Henrietta NY. 14467

585-334-9279

585-415-0071


[rufflemj@frontiernet.net](mailto:rufflemj@frontiernet.net)



# Yahrzeits

From Dec. 1 to Dec. 31, 2011 (Kislev 5 to Tevet 5, 5772 )

<u>Name</u>	<u>Observed</u>	<u>Jewish</u>	<u>Name</u>	<u>Observed</u>	<u>Jewish</u>
Ray Schatz	Dec. 1	Kislev 5	Louis Steinfeld	Dec. 16	Kislev 20
Minnie Gan Kotzin	Dec. 2	Kislev 6	Abraham Berkowitz	Dec. 17	Kislev 21
Benjamin Markowitz	Dec. 2	Kislev 6	Nathan Dorfman	Dec. 17	Kislev 21
Barnet Rothstein	Dec. 2	Kislev 6	Regina Einhorn	Dec. 17	Kislev 21
Abe Fishman	Dec. 3	Kislev 7	Bernard Friedman	Dec. 17	Kislev 21
Ethel Levin	Dec. 3	Kislev 7	Sara Gorelick	Dec. 17	Kislev 21
Phillip Melin	Dec. 3	Kislev 7	Anna Pollock	Dec. 17	Kislev 21
Myron Grashow	Dec. 4	Kislev 8	Elsie Grashow	Dec. 18	Kislev 22
Pauline Markowitz	Dec. 4	Kislev 8	Ralph Scoll	Dec. 18	Kislev 22
Esther Brothman	Dec. 5	Kislev 9	Leonard Gordon	Dec. 19	Kislev 23
Howard Goldenberg	Dec. 5	Kislev 9	Joseph Stein	Dec. 19	Kislev 23
Ruth Goldstein	Dec. 5	Kislev 9	Max Ambush	Dec. 20	Kislev 24
Ethel Tishkoff	Dec. 5	Kislev 9	Sylvia Berger	Dec. 21	Kislev 25
Ida Wolinsky	Dec. 5	Kislev 9	Abraham Berkov	Dec. 21	Kislev 25
Jessie Cohen	Dec. 6	Kislev 10	Max Berson	Dec. 21	Kislev 25
Belle Fogelman	Dec. 6	Kislev 10	Rosalie Bloom	Dec. 21	Kislev 25
Harry Applebaum	Dec. 7	Kislev 11	Gay Hersch	Dec. 21	Kislev 25
Mark Blue	Dec. 7	Kislev 11	Laurence Skopitz	Dec. 21	Kislev 25
Bany Cohen	Dec. 7	Kislev 11	Nathan Goldwasser	Dec. 22	Kislev 26
Renee Gimple	Dec. 7	Kislev 11	Donald Millstone	Dec. 22	Kislev 26
Lois Schwartz	Dec. 7	Kislev 11	David Silver	Dec. 22	Kislev 26
Abe Aroesty	Dec. 8	Kislev 12	Tibey Porraath	Dec. 23	Kislev 27
Mashie Fien	Dec. 8	Kislev 12	Abe Testa	Dec. 23	Kislev 27
Jack Finkelstein	Dec. 8	Kislev 12	Anna Fain	Dec. 24	Kislev 28
Mildred Levy	Dec. 8	Kislev 12	Muriel Katz	Dec. 24	Kislev 28
Julius Blass	Dec. 9	Kislev 13	Dora Lutzky	Dec. 24	Kislev 28
Marilyn Merin	Dec. 9	Kislev 13	Marvin Sacks	Dec. 24	Kislev 28
Max Robbins	Dec. 9	Kislev 13	Lillian Bridge	Dec. 25	Kislev 29
Julius Rosen	Dec. 9	Kislev 13	Albert Brightman	Dec. 25	Kislev 29
Eli Rothstein	Dec. 9	Kislev 13	Louis Levin	Dec. 25	Kislev 29
Ida Goldstein	Dec. 10	Kislev 14	Maurice Nobel	Dec. 25	Kislev 29
Isaac Harris	Dec. 10	Kislev 14	Julia Stiller	Dec. 25	Kislev 29
Bernard Judovitz	Dec. 10	Kislev 14	Rebecca Germanow	Dec. 26	Kislev 30
Mollie Young	Dec. 10	Kislev 14	Sheldon Harris	Dec. 26	Kislev 30
Evelyn Cohen	Dec. 11	Kislev 15	Samuel Herman	Dec. 27	Tevet 1
Sadie Davick	Dec. 11	Kislev 15	Edith Levy	Dec. 27	Tevet 1
Esther Lederman	Dec. 11	Kislev 15	Mimi Marcus	Dec. 27	Tevet 1
Leonard Stoler	Dec. 11	Kislev 15	Paul Vanas	Dec. 27	Tevet 1
Herbert Goldberg	Dec. 13	Kislev 17	Ben Drexler	Dec. 28	Tevet 2
Leonard E. Kaufman	Dec. 13	Kislev 17	Beatrice Herzog	Dec. 28	Tevet 2
Jacob Kreag	Dec. 13	Kislev 17	Fajwel Kinell	Dec. 28	Tevet 2
Jennie Rubin	Dec. 13	Kislev 17	Phillip Zellen	Dec. 28	Tevet 2
Marvin Wiseman	Dec. 13	Kislev 17	Harry Berinstein	Dec. 29	Tevet 3
Molly Connuck	Dec. 14	Kislev 18	Maurice Garey	Dec. 29	Tevet 3
Max Roth	Dec. 14	Kislev 18	Irene Herman	Dec. 29	Tevet 3
Gussie Stein	Dec. 14	Kislev 18	Barnet Selby	Dec. 29	Tevet 3
Harry Stein	Dec. 14	Kislev 18	Willard Derman	Dec. 30	Tevet 4
Madeline Berger	Dec. 15	Kislev 19	Anna Robbins	Dec. 30	Tevet 4
Marie Goldwasser	Dec. 15	Kislev 19	Mildred Safer	Dec. 30	Tevet 4
Max Rosenthal	Dec. 15	Kislev 19	Lillian Mountain	Dec. 31	Tevet 5
Arnold Shapiro	Dec. 15	Kislev 19	Grace Gittel Springer	Dec. 31	Tevet 5
Michael Greenberg	Dec. 16	Kislev 20	Joseph Weissman	Dec. 31	Tevet 5
Jacob Laffer	Dec. 16	Kislev 20	Lillian Yaravitz	Dec. 31	Tevet 5
Louis Steinfeld	Dec. 16	Kislev 20			



**ALENT - BAKER**  
**MONUMENTS**  
 IN-HOME CONSULTATIONS  
**385-1006**  
**Lynn Baker-Alent**



***Your Guests will RAVE!***

**Pattie Taylor-Brown**  
 Event Specialist/Owner

**David Brown**  
 Executive Chef/Owner

**(585) 244-2870**  
 info@rochestercaterer.com  
 www.RochesterCaterer.com

<b>Minimum Donations</b>	
Greeting Card Mailed Out	\$5.00 ea.
4 Memorial or Greeting Cards	\$18.00
Tree of Life Leaf	\$72.00
Siddur Sim Shalom	\$30.00
HH Prayer Book NEW!	\$36.00
Etz Hayim	\$75.00
Basic Kiddush	\$72.00
Cholent Sponsor	\$18.00
Wine/Challah Sponsor	\$18.00
Memorial Plaque	\$270.00
Non Member	\$414.00
Cemetery Plots In Riverside	
Member	\$600.00
Non-Member	\$800.00



**Send a Card to a friend or loved one!**

**Make checks payable to: Temple Beth David, 3200 St. Paul Blvd., Rochester, NY 14617**

Date \_\_\_\_\_ Amount enclosed \$ \_\_\_\_\_ (minimum donation \$5.00 or 4 for \$18.00)

Address:

From: \_\_\_\_\_ To: \_\_\_\_\_  
 \_\_\_\_\_  
 \_\_\_\_\_

Reason for Card/Message:

Fund : ☐ D. Solomon    ☐ M. Fishman    ☐ Rabbi Skopitz Youth Fund    ☐ Temple Residence  
☐ Mitzvah/Kiddush    ☐ Capital Improvement    ☐ Library    ☐ H. Kraus/Adult Ed.  
☐ Torah Repair Fund    ☐ USY/Kadima    ☐ Shiva Chevra    ☐ Rabbi Discretionary's Fund  
☐ Gilbert Rosenbaum Fund    ☐ PreK Shabbaton

Minimum Donation is \$5.00. If no fund is specified, David Solomon Building Fund will be named.



3200 ST. PAUL BLVD. ROCHESTER, NY 14617

*Address Service Requested*

NON-PROFIT ORG.  
U.S. POSTAGE  
**PAID**  
ROCHESTER, NY  
PERMIT NO. 1111

«F1»

«F2»

«F3»

«F4»

AN AFFILIATE OF THE UNITED SYNAGOGUE OF CONSERVATIVE JUDAISM

**Executive Officers:**

**President:** Martin Presberg

**Vice Presidents:**

- **Administration:** Helen Kashtan
- **Finance:** Sy Zivan
- **Ritual:** Gary Cohen
- **Education:** Joan Papkin
- **Building:** Scott Davis, Ed Drexler
- **Recording Secretary:** Lewis Rothberg

---

**Temple Activity Chairs:**

**Judaica Shop:** Linda Servetnick

**Men's Club:** Jonathan Papkin

**Sisterhood:** Debbie Steinfeld & Jackie Kaufman

**Bikkur Cholim:** Karen Zivan

**Bulletin Folding:** Dorothy Sherr

**Book of Remembrance:** C. Halpern & D. Steinfeld

**Bingo:** Sylvia Roth

**Shiva Chevra:** Merrie Franklin

**Website Coordinators:** Mike Berke, Neal Eckhaus

**Membership:** Dave Kaufman

**Marketing:**

**Temple Funds:**

- **Capital Improvement Fund**
- **David Solomon Memorial Building Fund**
- **Gilbert Rosenbaum Fund**
- **Herb Kraus Adult Education Fund**
- **Library Fund**
- **Mitzvah Kiddush Fund**
- **Marsha Fishman Memorial Education Fund**
- **Rabbi Skopitz Memorial Youth Fund**
- **Rabbi's Discretionary Fund**
- **Shiva Chevra Fund**
- **Temple Residence Fund**
- **Torah Repair Fund**
- **USY/Kadima Fund**

**Temple Office:** Maria Dewhirst 266-3223

**Temple Website:** <http://www.tbdrochester.org/>

**Email:** [office@tbdrochester.org](mailto:office@tbdrochester.org)