



Temple Beth David Bulletin

April 2009

Rabbi Geoffrey Goldberg, Ph.D.

Ron Kraus, President

Samuel Asher, Cantor

From the Rabbi's Desk

Rabbi's Office 730-5179

ggoldberg@rochester.rr.com

One of the integral aspects of our daily minyan (alas, only on Sunday mornings but one day I hope this will extend to Mondays and Thursdays, when the Torah is read) is the opportunity to give to *tzedakah*. TBD's tradition is to participate in this *mitzvah* after the *amidah*, thus transitioning from prayer to action. The recent combined contributions via the little *pushke* totaled over \$600. Energized by the collection of such a wonderful sum of money I have decided to match the minyan's sum with a similar amount from my Discretionary Fund (made possible by your generous donations). We decided to divide this amount between the following organizations:

1. American Friends of Magen David Adom
2. Masorti Foundation for Conservative Judaism
3. Yad Sarah
4. Mazon

A word on three of these organizations:

The **Masorti Foundation for Conservative Judaism** plays a vital role in helping to build up the Masorti (Conservative) Movement in Israel. Orthodox religious institutions in Israel receive funds in abundance from the government, but the Masorti and Reform Movements are denied such funding. Nevertheless, the Masorti Movement is making wonderful strides and is no longer an unknown entity to the average Israeli. Further, rather than being an "American import," the Israeli Masorti is creating its own Israeli identity, and attracting increasing numbers of Israelis who want to connect to the *masoret*, the religious tradition, but in an open, pluralistic and egalitarian manner.

Yad Sarah is a wonderful organization: it is Israel's largest voluntary organization, providing a spectrum of

free or nominal cost services to make life easier for the sick, the disabled and the elderly. By providing home care, it makes a vital contribution to keeping the ill and elderly out of institutions as long as possible. One of its best-known services is the lending of medical and rehabilitative equipment on a short-term basis free of charge, especially crutches and wheelchairs. (This is how I came to be acquainted with Yad Sarah: I broke my foot when living in Israel and needed crutches.) One in two Israeli families has been helped by Yad Sarah and 380,000 Israelis use its services yearly.

Mazon (Hebrew for "food," as in *Birkat ha-mazon*, the Blessing after Food) allocates funds from the Jewish community to prevent and alleviate hunger among people of all faiths and back-

(Continued on page 3)

April Schedule

Shabbat Evening: 7:30 p.m.

The next TBD Service at the JCC will be on Friday, April 24 at 6pm in the Senior Lounge.

Shabbat Morning: 9 a.m.

Young Children's Shabbaton:

10:00 to Noon Sat.

Sunday Minyan: 9:30 a.m.

Family Services: 10:30am

Apr. 4 and Apr. 18

Young Children's Shabbat Svc. :

April 4



Please remember to contact the Temple Office if you are considering scheduling any kind of event at Temple. This will help keep everyone informed and avoid scheduling conflicts.

We are handicapped accessible and equipped with a hearing loop.

The mission of Temple Beth David is to provide an environment where the concepts of community prayer, education, and service to the greater Jewish community are provided within the context of Conservative Judaism. We pride ourselves on being a friendly, participatory, egalitarian community, welcoming all to be a part of our synagogue family.

Ascending the Ladder

Ron Kraus, President 385-3696

In last month's bulletin, I was "thinking on paper" about how our synagogue has many strengths and that these assets must continue to be built upon for continued development of the congregation as well as of individuals. To recap, some of these assets are: a home made spirit (doing things like building our synagogue on our own), a welcoming, hamish community, lively and participative services, an egalitarian and accepting atmosphere, a knowledgeable group of congregants, and an artistic and fun-like tendency.

Since then, I was musing how our congregation might look given continued development, programming, and involvement. Reading the book, *Finding a Spiritual Home: Transforming the American Synagogue*, I was caught by a quote. As background to this quotation, the synagogue mentioned in it is B'nai Jeshurun (BJ), a Conservative shul in NYC that has gone through a remarkable renaissance and has grown from a small number to several thousand members. The rabbi quoted is the second head rabbi of BJ, Rabbi Rolando Matalon, originally from Argentina. I include the quote here, not to see how to grow to thousands, but to spark the imagination of readers to push and reach for activity levels that are possible.

Far too many people attend BJ without being connected in any meaningful way. We are far from being a community centered around the study and practice of Torah and dedicated to tikkun olam (repair of the world).

We desperately need to redefine ourselves. We must all dedicate ourselves to strengthen and nurture our community. We must recapture a sense of shared values and our vision of an active religious community that seeks G-d, and serves G-d with love

and commitment in order to realize G-d's will for tikkun olam. In order to achieve that, we must be willing to reject a Judaism that remains in the periphery of our lives, a Judaism that is parve (Yiddish for neither milk nor meat) and that demands nothing of us. Instead, our experience of Judaism at BJ must be life-changing, engaging, challenging, and must be authentic and true to our values. And it must be lived in community; a community of kavannah, of intention, dedication, and purpose.

This is not a simple or light task. It will require much of every one of us. It will demand effort of thought and deed as well as discipline. The alternative is stagnation, disillusion, and watering down. The result is minimalist, superficial Judaism of no substance that already exists in far too many places and has no impact on the lives of individual Jews...I believe that we must begin by taking seriously our commitment to the study of Torah, prayer with kavannah (intention) and gemilut chasadim (acts of lovingkindness) as the focus of our work as a community...We must maximize our participation in all programs and volunteer opportunities. We must seek a level of intimacy within our larger community by making an effort to belong to a havurah, a fellowship group that meets regularly to study, to celebrate Shabbat and other holy days, that acts as a support group, and that volunteers in specific areas of our communal work. We must become a community of kindness...

I invite you to ask yourself the question: Am I willing to ascend the ladder? If we are all willing to climb, we will have the power to raise our community to spiritual greatness.

[Rabbi Rolando Matalon, *Jeshurun Journal*, Summer 1998.]

So, what can we do at Temple Beth David to reach greater activity levels, more spiritual development, greater heights of repairing the world, deeper bonds of community and of meaningful involvement?

For one (and these ideas come from both Nancy and myself), we can foster more and closer bonds of helpfulness, caring, and support to each other. We can form more havurot, or friendship groups, around social activities, learning, or celebrating Shabbat. We can develop teams of people around a social action project or other Temple effort (planting flowers, planning an event). We can get to know each other better by having a congregant you don't know over for lunch, by talking about what really matters to you, by doing a social activity together, by helping someone out on an ongoing basis when there is sickness or death. We can adopt a new or "close to new" family to help them get acquainted with Temple. We can, in essence, express some of our deeper values, but act on them through a buddy in Temple to make our lives more integrated and make Temple more meaningful.

For another, we can expand upon our spirited prayer experiences. We can have a Shabbat retreat experience. We can stand before an open ark on Shavuot to personally imagine receiving the Torah on Sinai. We can go outdoors and have a service under the trees, or we can go to the lake and have "havdallah on the beach" (an idea of one of our rabbinic candidates) to evoke the spirit for those who commune through nature. We can share experiences we have had at other synagogues and see which ones we might use to enhance the personal relevance of prayer to our lives, as well

(Continued on page 3)

From the Rabbi's Desk, con't.

Rabbi Geoffrey Goldberg

ggoldberg@rochester.rr.com

730-5179

(Continued from page 1)

grounds, including the Jewish poor. Some 900 synagogues in the USA have "partnerships" with Mazon. Donations to Mazon should always be kept in mind and factored into the cost of life-cycle celebrations such as weddings and *b'nei mitzvah*. As we approach the *sedarim*, at which we recite, "let all who are hungry come and eat" a donation to Mazon at this season is especially appropriate.

In addition to the above, there has also been a very gratifying response to the "Soldier's Passover Package Project" organized by **Keith Freedman**. The **IHSC** also participated in this project through its Passover Candy Sale. Not only have Jewish troops enjoyed

hamentashen through TBD and the efforts of Keith, but they will soon be receiving *matzot* and other foods for Passover. The sum raised for this wonderful endeavor will likewise be matched by a contribution from my Discretionary Fund.

As we approach Passover, it is important to remember that our holidays have their own special forms of *tzedakah*:

On Passover, one invites the hungry to the seder, in preparation for the holiday, a special *Maot Hittim* (lit. "wheat money") fund is raised. Purim has its *matanot la-eyyonim* (gifts to the poor), and Shavuot its *bikkurim*

(first fruits) brought to the Temple and shared with the priests even as the tithe is shared with the poor.... On Sukkot, *matanot aniyim* (agricultural portions for the poor) are left in the field for the needy...." Rabbi Irving Greenberg, *The Jewish Way: Living the Holidays*

In these increasingly difficult times more and more persons are being affected by the repercussions of the declining and shrinking economy. As a consequence our contributions to *tzedakah* remain more important than ever.

Wishing you a *hag kasher* and *sameah*. -Rabbi Geoffrey Goldberg

Ascending the Ladder, con't.

(Continued from page 2)

as to potentially draw in those who come infrequently to services and attract the unaffiliated.

For a third idea, we can more seriously undertake Tikkun Olam, or repairing our world. This can take the shape of a greening of our synagogue (and perhaps of a few of our homes). It could be adopting a classroom of students in the city. It might be in-reach to shut-ins in our congregation or arranging for our children and adults to visit those in the Jewish home. It could be joining with existing social action efforts, like those at Temple Sinai, to work at soup kitchens or shelter the homeless. It might be offering supportive ears to those in our congregation or in Rochester who are losing their jobs or their nest eggs. Social action, as in these projects, is a fabulous way to express one's values through our own community and in the process to forge close

bonds with other congregants.

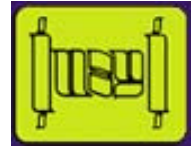
For a fourth area of growth, we might ask what is our next step in knowledge building in our community? Are there those who are shy about expanding their Hebrew so they can more fully participate (and therefore don't)? Can we do in-reach and ask congregants who signed up and expressed interest on their registration form in certain activities but have not yet put their toes in the water? Can we find out what people want to learn, particularly as it relates to integrating with their path of spiritual/religious development? Can we hook into teleconference technology and take classes at the Cleveland College of Jewish Studies or some other institution?

For a fifth idea, can we build on our talented and interested members who love music, art, dance, theater, and playful fun? Are there activities that can extend ourselves through these

creative venues and build bonds, knowledge, and meaningful activity? I would like to expand on these ideas by hearing from congregants what some of your ideas are. Please contact me at 385-3696 or at nancyronkraus@earthlink.net to let me know.

So, re-stoking the flames of involvement, energy, and activity, fervently requested by Rabbi Matalon, is just as relevant for us at Temple Beth David. We can ask the same question to challenge ourselves as he prodded the congregants of BJ. Am I willing to ascend the ladder - the ladder of building closer community bonds at TBD, of developing spiritual growth, and of helping to repair our needy world? And maybe, just maybe, we will be able to hear some answers.

Ron Kraus, President



March- What a month!! Our **USY Shabbaton** was a rousing success! We gathered together on Friday and all helped cook and set up for dinner. We had Shabbat dinner and then led Friday night services. Thank you to **Miriam and Nahoma** for leading us. We then had an **AWESOME** program led by Nahoma all about the torah portion we had a scavenger hunt through the building looking for shekels! Our discussion was deep as it always is. We slept in the social hall and led services Saturday morning. Thank you to all those who helped lead services. **Bill Gertzog** explained "hagbah" to us and even where it origi-

nated. Did you know this practice is thousands of years old?!! The afternoon was full of time to hang with our friends. From a Shabbat walk, hanging on a playground, to playing board games fun was had by all. We participated and led mincha and ma'ariv services, had our third meal and ended with havdalah. A big thank you goes out to Bill S. for helping us with the lights and the heat and waking us up! Thank you to Maria for all her help in making sure preparations were going well. Thank you also to **Pam and Gary Cohen as well as Martin Preberg and Shelli Asher** for "hanging with us". Thank you to Bill Gertzog for

showing us how to lift the torah as well as the origins of it, and for not letting them fall when we lifted. And thanks to **Sue Kruchten** (my mom), as always. All in all it was a GREAT time.

This month was also busy with a pre-Passover Chocolate Seder and a movie and ice cream get together.

Look out for details coming out for April programs including a USY/Kadima Shabbat on the 11th, and a program on the 19th.

Joshua Kruchten- VP Communication



There was a time when Sarah's chicken soup was the highlight of every Passover Seder.

This year, Sarah cannot afford the ingredients to make a pot of soup.

The Passover *Haggadah* teaches, "Let all who are hungry enter and eat." With your support, MAZON will honor this tradition by helping people like Sarah.



A JEWISH RESPONSE TO HUNGER

1990 South Bundy Drive, No. 260 | Los Angeles, CA 90025
Tel 310.442.0020 | Fax 310.442.0030
mazon.org | mazonmail@mazon.org

Adult Education Offering

Writing: Responding to Prayer

Join Jonathan Rich in looking at several traditional prayers and writing your own personal response to them. Participants will try out writing their own personal prayers and explore how the relevancy of our own prayers might enhance meaning. Temple member Jonathan Rich is a writer who teaches writing at St. John Fisher.

Sessions will be held Sunday mornings at Temple at 10:30 April 26, May 3 and 10. Please call Jonathan at 473-6748 if you are interested in attending.

Don't Miss Family Services at Temple Beth David April 4 and April 18

This service is for school aged children and their parents. We have a great time discussing Torah, singing together, and learning new prayers. If you have any questions, please call Nancy Kraus at 385-3696.

News from VP, Building and Grounds

Mike Walker Mike@MikeWalkerHomes.com 585-721-9857

SAVE THE DATE – May 10, 2009 – Spring Clean Up at Temple. The past 3 years we've had the same five people helping with the cleanup. I'm not saying that I don't want them this year ... *just that I'd like to have some others too!* It's a great way to get out and enjoy the nice spring weather, meet new congregants, contribute to Temple, and there's a lot of jobs to help with and everyone is welcomed. We'll be doing our yearly weeding (should be easier due to weed barrier we installed last year), raking, pruning, laying of fresh mulch, cleanup in the parking lot and around Temple as well as other various other jobs

that need tending to. This is a great way that we can help keep Temple's costs down by doing it ourselves. I would like to have you RSVP via e-mail or through the office to the event ... even if you're not sure so that I can keep you aware of the plans.

This winter has been kind to us as there haven't been any break downs that required any unexpected costs. In the fall there was a break in the library ... but fortunately since then we've been without incident. This spring we'll need to tend to the roof in the small sanctuary that seemed to spring a

small leak during one of the winter thaws. There is also a small issue (ongoing for many years) in one of the classrooms with some small amounts of standing water near the outside wall in the spring time. Other than those small issues ... Temple fared well throughout the winter months!

If you have any suggestions of areas that need tending to ... please don't hesitate to contact me at Mike@MikeWalkerHomes.com or at 585-721-9857 and I'd be happy to hear and address your concerns.

TBD Spring Clean-Up



Come help out! Bring the whole family!
Sunday May 10, 10:30am - 1pm

**Please bring garden implements.
Light refreshments will be served.**

Please RSVP Mike Walker at 721-9857 or Mike@MikeWalkerHomes.com

Save the Date! Thursday, May 28 6pm

***We will have a Dairy Dinner and Study Session
in Celebration of Shavuot honoring
Founding Members of Temple Beth David***

\$18 per person
\$12 for children under 13
All the details next month!



News From Ritual

Gary Cohen

377-2141

Gary.Cohen@xerox.com

Passover will begin at sunset on April 8th (Wednesday) and services this year will be observed jointly between TBD, Temple Beth Am (TBA) and Beth Hamedresh – Beth Israel (BHBI). The first and last days of Pesach, namely Thursday (April 9th) and Thursday (April 16th), will occur at TBD, while the second day (Friday April 10th) will occur at TBA and the seventh day (Wednesday April 15th) at BHBI – TBD will not be open for either the second or seventh day services. Services for the first and second days of Pesach

will begin at 9:30 A.M., while services for the seventh and eighth days will begin at 9:00 A.M. (services on the 16th will include *Yizkor*). As currently planned, a special Kosher Le-Pesach Kiddush will be provided during Pesach (April 11th).

Note ***Birchat Hachammah***, a blessing recited on the Sun once every twenty-eight years will occur on April 8th. According to a tradition, the once-in-28-years Blessing of the Sun celebrates the occasion when the sun returns to the position where it was when it was

first created, on the same day of the week and the same hour of the day as it was then. Any plans for observance of *Birchat Hachammah* within the Rochester Jewish community will be brought to the attention of the Congregation soon.

While **Shavuot** is still over a month away (with services on May 29th and 30th), a special study session as well as a dinner to honor founding members is being organized for the evening of May 28th – further details will follow.

Passover Services Schedule Summary:



Thursday, April 9	Services at Temple Beth David	9:30am
Friday, April 10	Services at Temple Beth Am	9:30am
Wednesday, April 15	Services at BHBI	9:00am
Thursday, April 16	Services at Temple Beth David	9:00 am

Sponsored Kiddushes and Cholents

- Mar. 14, Sponsored Kiddush **In Honor of the USY Shabbaton**, by Temple's USY group.
- Mar. 21, Sponsored Kiddush and Cholent **In Appreciation of Temple Beth David's Adult Education Offerings**, by Stan & Michelle Gross. Visiting **Rabbi Aviva Berg** will hold a study session.
- Mar. 28, Sponsored Kiddush and Cholent by Rabbi Search Committee. Visiting **Rabbi Ute Steyer** will hold a study session.
- Apr. 4, Sponsored Kiddush and Cholent by Rabbi Search Committee. Visiting **Rabbi Benjamin Katz** will hold a study session.
- Apr. 11, Special Kosher L'Pesach Kiddush.
- Apr. 18, Sponsored Kiddush Luncheon and Cholent **In Honor of the Men's Club Shabbat** by the Temple Beth David and Temple Beth El Men's Clubs
- May 2, Sponsored Kiddush and Cholent **In Honor of Jonathan Aranov's Bar Mitzvah**, by his parents, Ruth and Ethan Aranov.
- May 9, Sponsored Kiddush and Cholent **In Honor of Hanna Kielar's Bat Mitzvah**, by her parents, Teresa and Bruce Kielar.
- May 16, Sponsored Kiddush and Cholent **In Honor of the Sisterhood Scholar in Residence, Jan Katz**. Study Session to follow services.
- May 23, Sponsored Kiddush and Cholent **In Honor of Matan Presberg's Bar Mitzvah**, by his parents, Marcy Berger and Martin Presberg.

Call the office to sponsor a kiddush or cholent today!

JUST A QUICK NOTE...

13, Aviv 2448

Tzipi,

I know we're in a hurry but don't forget to pack:

The maps

Unleavened bread

Swim fins and snorkels

The neighbors' jewelry

"Waiting for Good Dough" paperback

Golf clubs for the TBD Golf Tournament and Dinner

Love, **מֹשֶׁה**
(Moshe)

P.S. Too late to stop at the pro shop for balls. We'll use a bucket of Miriam's knaidlach instead. Oy !!!



MEN'S CLUB SHABBAT WEEKEND

Friday April 17

Saturday Apr. 18

Held Jointly with Temple Beth El

- Friday Night Joint Svc/Dessert @ TBE 6pm
- Saturday Joint Svc. at TBD 9am with extended Kiddush
- Saturday evening Game Night
Havdalah Service 7:30pm
Wine and cheese
Havdalah Service
Poker, Mahjong, etc.
Followed by Dessert and Coffee
*Reservations needed for Game Night
call Jonathan Papkin 576-0130 by April 12
for location and more details*
- Sunday, April 19 – 9:30am. "The Jewish Influence in Music."
Dr. Daniel Chazanoff. Breakfast to follow at TBE.





Please note: When the bulletin went to press, the complete 2009 Passover information was not yet available from the Rabbinical Assembly. In the interest of providing the most succinct guideline we have included the 2008 Guide.

The Torah prohibits the ownership of *hametz* (leaven) during Pesah. Therefore, we arrange for the sale of the *hametz* to a non-Jew. The transfer, *mekhirat hametz*, is accomplished by appointing an agent, usually the rabbi, to handle the sale. It is valid and legal transfer of ownership. At the end of the holiday, the agent arranges for the reversion of ownership of the now-permitted *hametz*. If ownership of the *hametz* was not transferred before the holiday, the use of this *hametz* is prohibited after the holiday as well (*hametz she-avar alav ha-Pesah*).

Since the Torah prohibits the eating of *hametz* during Pesah, and since many common foods contain some admixture of *hametz*, guidance is necessary when shopping and preparing for Pesah.

During the eight days of Pesah, *hametz* cannot lose its identity in an admixture. Therefore, the minutest amount of *hametz* renders the whole admixture *hametz* and its use on Pesah is prohibited. However, during the rest of the year, *hametz* follows the normal rules of admixture, i.e. it loses its identity in an admixture of one part *hametz* and sixty parts of non-*hametz* (*batel beshishim*). This affords us the opportunity to differentiate between foods purchased before and during Pesah.

What follows is a general guideline. However, your rabbi should be consulted when any doubt arises. *Kosher le-Pesah* labels that do not bear the name of a rabbi or one of the recognized symbols of rabbinic supervision, or which are not integral to the package, should not be used without consulting your rabbi.

Prohibited foods include the following: leavened bread, cakes, biscuits, crackers, cereal, coffees containing cereal derivatives, wheat, barley, oats, spelt, rye, and all liquids containing ingredients or flavors made from grain alcohol.

Most Ashkenazic authorities have added the following foods (*kitniyot*) to the above list: rice, corn, millet, legumes (beans and peas; however, string beans are permitted). The Committee on Jewish Law and Standards has ruled unanimously that peanuts and peanut oil are permissible. Some Ashkenazic authorities permit, while others forbid, the use of legumes in a form other than their natural state, for example, corn sweeteners, corn oil, soy oil. Sephardic authorities permit the use of all of the above. Consult your rabbi for guidance in the use of these products.

PERMITTED FOODS: A. The following foods require no *kosher le-Pesah* label if purchased prior to Pesah: unopened packages or containers of natural coffee without cereal additives (However, be aware that coffees produced by General Foods are not kosher for Passover unless marked KP); sugar, pure tea (not herbal tea); salt (not iodized);

pepper; natural spices; frozen fruit juices with no additives; frozen (uncooked) vegetables (for legumes see above); milk; butter; cottage cheese; cream cheese; ripened cheeses such as cheddar (hard), muenster (semi-soft) and Camembert (soft); frozen (uncooked) fruit (with no additives); baking soda.

B. The following foods require no *kosher le-Pesah* label if purchased before or during Pesah: Fresh fruits and vegetables (for legumes see above), eggs, fresh fish and fresh meat.

C. The following foods require a *kosher le-Pesah* label if purchased before or during Pesah: All baked products (matzah, cakes, matzah flour, farfel, matzah meal, and any products containing matzah); canned or bottled fruit juices (These juices are often clarified with *kitniyot* which are *not* listed among the ingredients. However, if one *knows* there are no such agents, the juice may be purchased prior to Pesah without a *kosher le-Pesah* label); canned tuna (since tuna, even when packed in water, has often been processed in vegetable broth and/or hydrolyzed protein--however, if it is known that the tuna is packed exclusively in water, without any additional ingredients or additives, it may be purchased without a *kosher le-Pesah* label); wine; vinegar; liquor; oils; dried fruits; candy; chocolate flavored milk; ice cream; yogurt and soda.

D. The following processed foods (canned, bottled or frozen), require a *kosher le-Pesah* label if purchased during Pesah: milk, butter, juices, vegetables, fruit, milk products, spices, coffee, tea, and fish, as well as all foods listed in Category C.



2008 Pesah Guide, con't.

The Rabbinical Assembly

DETERGENTS: If permitted during the year, powdered and liquid detergents do not require a *kosher le-Pesah* label.

MEDICINE: Since *hametz* binders are used in many pills, the following guidelines should be followed: If the medicine is required for life sustaining therapy, it may be used on Pesah. If it is not for life sustaining therapy, some authorities permit, while others prohibit. Consult your rabbi. In all cases, capsules are preferable to pills.

KASHERING OF UTENSILS: The process of kashering utensils depends on how the utensils are used. According to halakhah, leaven can be purged from a utensil by the same process in which it was absorbed in the utensil (*ke-voleo kakh poletu*). Therefore, utensils used in cooking are kashered by boiling, those used in broiling are kashered by fire and heat, and those used only for cold food are kashered by rinsing.

A. EARTHENWARE (china, pottery, etc.) may not be kashered. However, fine translucent chinaware which has not been used for over a year may be used if scoured and cleaned in hot water.

B. METAL (wholly made of metal) **UTENSILS USED IN FIRE** (spit, broiler) must first be thoroughly scrubbed and cleansed and then made as hot as possible. Those used for cooking or eating (silverware, pots) must be thoroughly scrubbed and cleaned and completely immersed in boiling water. Pots should not be used for a period of at least 24 hours between the

cleaning and the immersion in boiling water. Metal baking utensils cannot be kashered.

C. OVENS AND RANGES: Every part that comes in contact with food must be thoroughly scrubbed and cleaned. Then, oven and range should be heated as hot as possible for a half hour. If there is a broil setting, use it. Self-cleaning ovens should be scrubbed and cleaned and then put through the self-cleaning cycle. Continuous cleaning ovens must be kashered in the same manner as regular ovens.

D. SMOOTHTOP ELECTRIC RANGES present a problem. They cannot be covered with foil, nor heated at a high temperature, nor cleaned with an abrasive cleaner. Consult with the manufacturer on how to clean the smoothtop. Then discuss with your rabbi if that method of cleaning is adequate enough to kasher the smoothtop. Some will not be able to be kashered.

MICROWAVE OVENS, which do not cook the food by means of heat, should be cleaned, and then a cup of water should be placed inside. Then the oven should be turned on until the water disappears. A microwave oven that has a browning element cannot be kashered for Pesah.

E. GLASSWARE: Authorities disagree as to the method for kashering drinking utensils. One opinion requires soaking in water for three days, changing the water every 24 hours. The other opinion requires only a thorough scrubbing before Pesah, or putting them through a dishwasher.

Glass Cookware: There is a difference of opinion as to whether it is to

be kashered. One opinion is that it must be kashered. After a thorough cleansing, there should be water boiled in them which will overflow the rim. The other opinion is that only a thorough cleansing is required.

Glass Bakeware, like metal bakeware, may not be kashered.

F. DISHWASHER: After not using the machine for a period of 24 hours, a full cycle with detergent should be run.

G. ELECTRICAL APPLIANCES: If the parts that come into contact with *hametz* are removable, they can be kashered in the appropriate way (if metal, follow the rules for metal utensils). If the parts are not removable, the appliance cannot be kashered. (All exposed parts should be thoroughly cleaned.)

H. TABLES, CLOSETS AND COUNTERS: If used with *hametz*, they should be thoroughly cleaned and covered, and then they may be used.

I. KITCHEN SINK: A metal sink can be kashered by thoroughly cleaning and then pouring boiling water over it. A porcelain sink should be cleaned and a sink rack used. If, however, dishes are to be soaked in a porcelain sink, a dish basin must be used.

J. HAMETZ AND NON-PASSOVER UTENSILS: Non-Passover dishes, pots and *hametz* whose ownership has been transferred, should be separated, locked up or covered, and marked in order to prevent accidental use.

News from IHSC

Marcy Berger marcy.berger@gmail.com

467-7820

This year the IHSC staff decided to take a careful look at how we teach holidays. We wanted to be sure that each class was looking at the holidays from a different perspective and that our instruction gives the students an opportunity to look at the material more deeply as they get older. We also chose to learn more about the holidays as a staff. We have been reading Michael Strassfeld's book The Jewish Holidays. This has given us an opportunity to extend our own thinking about the holidays so that we can bring fresh insights to our work with the children.

The last chapter we read was about Passover. We talked about what we learn from retelling the story of our

slavery in Egypt and our passage to freedom. The lessons are both historical and relevant to our lives today. We also talked about the dual symbolism of many of the Passover items such as the matzah and the charoset. It's interesting that they symbolize both slavery and freedom.

We also took a look at the theory of multiple intelligences—the idea that there are many different ways to learn things and that different people have strengths in different styles of learning. We brainstormed ways to teach the 10 plagues in all of these different ways. I am hopeful that working together this way will make the experience the students get at the IHSC a more meaningful one.



3rd graders examine Bernie's tefillin

'09-'10 IHSC Registration

- ✧ **The IHSC will be running registration for the 2009-2010 school year on Sunday, May 17 at 9:30 in the IHSC main area.**
- ✧ **Registration forms and tuition payments will be due at that time. More information will be available in the May bulletin.**
- ✧ **If you have questions or concerns, you can contact Marcy Berger marcy.berger@gmail.com or Sue Eckhaus seckhaus@yahoo.com.**
- ✧ **Please be sure that your temple dues are up to date before registration.**

Rabbi's Office Hours

Rabbi Geoffrey Goldberg: 730-5179 office

Home phone, for emergencies: 319-4407

Please note that Rabbi will not have office hours on April 12 or April 26.

Sundays

10am to Noon

Tuesdays

3pm to 5pm

Temple Office Hours

Monday through Friday 9:30am - 2pm

In Addition: Tuesday 4 to 6pm and Sundays 8:30am to Noon, 1pm - 5pm

Please note the office will be closed April 9 - 10, April 12, and April 15-16.

News From VP Education

Sue Eckhuas, VP Education

244-5268

seckhaus@yahoo.com

I am very excited to tell you that **Rabbi Goldberg's** Parashat Shemot sermon will be a part of the Library of Congress collection! Mazel Tov to Rabbi Goldberg!

The American Folklife Center is a part of the Library of Congress in Washington, D.C. The center "aims to be the national center for folklife documentation and research" and the web site "offers a virtual destination for those

who cannot visit" Washington. Check out the website at <http://www.loc.gov/folklife/aboutafc.html>.

Through the American Folklife Center's Inauguration 2009 Sermons and Orations Project sermons and orations that commented on the significance of the inauguration of 2009 have been collected. (<http://www.loc.gov/folklife/inaugural/>)

I became aware of the Inauguration 2009 Sermons and Orations Project just after the inauguration and was pleased that Rabbi was interested and excited to participate. Thanks goes to Maria for getting the sermon submitted by the due date. I look forward to finding his sermon on the website in the months to come! For now, you can find it on the temple website.

<http://templebethdavid.uscjhst.net/>

News from Kadima

Shelli Asher

461-3370



Kadima had a great experience recently organizing a book drive. Thanks to all that contributed to the three boxes of books we collected for the Rochester Jewish Coalition for Literacy.

Kirsten Buscetto, from the Jewish Community Federation wrote this, "Some of the children who will receive

these books will get their first chance to own their very own book. It's great to give them this wonderful opportunity to help them learn and grow; and you and the children are to thank for that! We can not thank you enough for your generosity. Also, thank you so much for organizing the books by age. Having the children write notes to put in the books was a fantastic way to per-

sonalize them for the kids they will be given to. Your kindness and all the effort you put into this wonderful collection is amazing!"

I can't imagine getting any better return on a project than that! It turned out to be enjoyable and very satisfying to all involved.

Help Wanted... Kadima Youth Group Advisor (Paid Position) **Temple Beth David's youth groups are vibrant and growing!**

We are seeking an energetic, creative, enthusiastic and organized individual to serve as Kadima advisor for this Conservative Jewish youth group serving grades 6-8. Responsibilities include program and event planning, attendance at Kadima/USY Shabbat and other joint programs, participation in regional activities, and program/youth supervision. The Kadima Youth Advisor will work with the USY Youth Advisor in annual planning and joint activities. Advisor must have own transportation. USY/Kadima or other Jewish youth group experience a plus.

Please send resumes to: Youth Committee, c/o Temple Beth David, 3200 St. Paul Blvd., Rochester, NY 14617

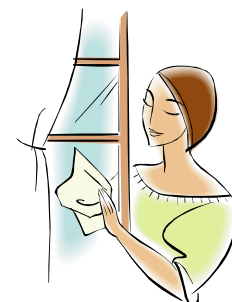
SPRING CLEANING & PASSOVER

It's time to start cleaning for Passover...

Don't forget our Arts & Heirlooms sale!

We will be glad to take any items that you no longer need or use.

*Thanks in advance. Happy Passover! Please contact:
Marsha Greenberg 467-7238 or Lois Markus 342-6793*



All in the Family

To submit information, contact the Temple Office at 266-3223

Mazel Tov, Bar Mitzvah!

Mazel Tov to **Jonathan Noah Aranov, son of Ruth and Ethan Aranov**, on his Bar Mitzvah, which will be celebrated on Saturday, May 2, at Temple Beth David. Jonathan is the grandson of Tova Moonay and Dr. Sheldon Moonay (z"L) and Rabbi Moshe Aranov and Mindy Aranov (z"L).

Jonathan is a seventh grader at Bay Trail Middle School. He enjoys visiting family and friends in Israel, photography, rip-stiking, volleyball, hiking and boating. He also likes to play piano, sing, read, protect the environment and hang out with his brother Ari and pets, Budley and Munchkin.

Happy Anniversary!

Richard & Debbie Steinfeld	April 8
Robert & Tammy Hersch	April 20
Marc Lande & Linda Servetnick	April 30
Jose Zayas & Barbara Fein-Zayas	April 30

Sincere Get Well Wishes:

Erna Przewuzman	Marsha Greenberg
Kalman Zohar	Morris Herman
Gerry Randall	

EMAIL TREE

PHONE TREE

In an effort to reach all the members of Temple Beth David in time-sensitive or urgent situations, we would welcome you to be part of the temple email list, if you aren't already. Please call the office to add your email. If we don't have an email on file, we will add you to our newly forming "phone tree list".

April Birthday Wishes!

<u>Name</u>	<u>Date</u>
Benjamin Saltzman	Apr. 1
Rebecca Saltzman	Apr. 1
Lois Markus	Apr. 2
Harold Fishman	Apr. 3
Ethan Kramer	Apr. 4
Sam Cohen	Apr. 6
Isaac Asher	Apr. 10
Henry Markowitz	Apr. 10
Joshua Freedman	Apr. 11
Harry Cohen	Apr. 12
Rhea Feinberg	Apr. 12
Lisa Klein	Apr. 14
Rickie Gordon	Apr. 16
Marsha Greenberg	Apr. 16
Jacob Snider	Apr. 16
Ellen Gertzog	Apr. 17
Eric Levy	Apr. 18
Phillip Lederer	Apr. 19
Julia Friedman	Apr. 23
Matan Presberg	Apr. 23
Marcia Rothstein	Apr. 23
Nahoma Presberg	Apr. 24
Miss Sylvia Stiller	Apr. 24
Joshua Ehrenberg	Apr. 25
Gabriel Erlichman	Apr. 25
Susan Meynadasy	Apr. 25
Carolyn Schiff	Apr. 25
Samuel Langmann	Apr. 26
Erwin Newell	Apr. 26
Michael Horowitz	Apr. 27
Hanna Kielar	Apr. 27
Alayna Hersch	Apr. 28
Judith Levy	Apr. 29

Join the TBD Men's Club for their 2nd Lecture Series and Breakfast

Dor L'Dor: Grandparents to Grandchildren: Estate Planning for Common Folk

Guest Speaker: Stephen Pheterson, Esq.

Time: 10:00 AM

Sunday, May 10th

RSVP requested to 576-0130

All are Wel-

come!

Donations Received February 1 to February 28, 2009

Please Note: Every effort is made to ensure accuracy in the Bulletin. Please let us know if an error is made and we will ensure a correction is noted in the next Bulletin.

DAVID SOLOMON FUND

Rose Kurlanshik

Florence Etingoff

Alfred Stiller

Sylvia Stiller

George Moidel

Mike & Toby Berke

Fanny Simon Passer

Sam & Sandra Cohen

Dorothy Schwartz

Florence Etingoff

Gertrude Goldberg

Joseph & Katie Goldstien

Get Well Wishes!

Perry Dornstein

Marilyn Goldberg

Stan & Michelle Gross

Lewis Rothberg

Bell Price

Kalman Zohar

Lilly Sherman

Mazel Tov!

On Naftali's Upsherin

Megan & Charley Beller

Bell Price

Happy Birthday Wishes:

Marvin Frank

Marc Lande

Joan Papkin

Pam Rosen & Gary Cohen

SHIVA CHEVRA FUND

Get Well Wishes:

Dave & Florence Phillips

Betty & Morris Herman

LIBRARY FUND

In Memory Of:

Joseph Klein

Morris & Betty Herman

HERB KRAUS ADULT EDUCATION

In Memory of:

Samara Beth Anderson

Jim and Ann Anderson

USY/KADIMA FUND

Get Well Wishes!

Dave & Florence Phillips

Harry & Marion Cohen

RABBI SKOPITZ MEMORIAL FUND

In Memory of:

Eliahu Patt

Dagan Vertman

Alice Salzberg

Get Well Wishes:

Dave Phillips

Florence Phillips

Jonathan & Carol Sacks

In Appreciation of Maria Dewhirst

Leonard & Sheila Berghash

Happy Birthday Wishes:

Bonnie Abrams

Helen Kashtan

Pam Rosen & Gary Cohen

Mazel Tov on your daughter's Bat

Mitzvah!

Jonathan and Carol Sacks

Gladys Garey

TORAH REPAIR FUND

In Memory of:

Maurice Epstein

Dennis & Marla Sullivan

Frank Sherman

Lilly Sherman

Irving Roth

Bell Price

Samuel Asher

Pam Rosen, Gary, Alex & Jordan
Cohen

Mazel Tov on your Bat Mitzvah!

Rachel Sacks

Pam Rosen, Gary, Alex & Jordan
Cohen

Mazel Tov!

On Naftali's Upsherin

Megan & Charley Beller

Pam Rosen, Gary, Alex & Jordan
Cohen

RABBI'S DISCRETIONARY FUND

In Memory of:

Harold and Selma Kay

Stephen & Marcia Kay

Anna Alent

Harry & Marion Cohen

Get Well Wishes!

Dave Phillips

Gladys Garey

MITZVAH / KIDDUSH FUND

In Memory of:

Lilly Abelson

Harry Abelson

Obbe Abelson

Harold & Rhea Feinberg

Get Well Wishes!

Dave Phillips

Florence Phillips

Arthur & Ida Dell

**Mazel Tov on your daughter's Bat
Mitzvah!**

Jonathan and Carol Sacks

Arthur & Ida Dell

Happy Birthday Wishes!

Susan Langmann

Gabriel Franklin

Art Dell

Art Long

Pam Rosen & Gary Cohen

Mazel Tov on your new home!

Betty & Morris Herman

Pam Rosen & Gary Cohen

MARSHA FISHMAN FUND

In Memory of:

Onalee "Onnie" Leshner

Miriam "Mickey" Wolff

Son of Gisela Haber

Dominic Parone

Dolly & Harold Fishman

Rheva, sister of Shirley Braiman

Annette Shapiro

Scott Caplan

Paul & Judy Eissenstat

Get Well Wishes!

Seymour Gray

Paul & Judy Eissenstat

**Mazel Tov on the birth of your great-
grandson, David Ryan!**

Gerald & Shirley Braiman

Annette Shapiro

David Lustik

Rae Fleisher

CHILDREN'S SHABBATON FUND


Happy Birthday Wishes!

Eva Okunieff

Pam Rosen, Gary, Alex & Jordan
Cohen

Yahrzeits From April 1 to April 30 (Nissan 7 to Iyar 4, 5769)

<u>Name</u>	<u>Civil</u>	<u>Jewish</u>	<u>Name</u>	<u>Civil</u>	<u>Jewish</u>
William Epner	Apr. 1	Nissan 7	Ethel Levin	Apr. 17	Nissan 23
Ezze Levin	Apr. 1	Nissan 7	Harold Phillips	Apr. 17	Nissan 23
Ezze Levin	Apr. 1	Nissan 7	Jacob Raphael	Apr. 17	Nissan 23
Mark Millstone	Apr. 1	Nissan 7	Maurice Herzog	Apr. 18	Nissan 24
Philip Nakrach	Apr. 1	Nissan 7	Leonard Lutzky	Apr. 18	Nissan 24
Richard L. Howell	Apr. 2	Nissan 8	Janette Shindel	Apr. 18	Nissan 24
Joseph Gastel	Apr. 3	Nissan 9	Bernard Cramer	Apr. 19	Nissan 25
Julius Judovitz	Apr. 3	Nissan 9	Anna Deckter	Apr. 19	Nissan 25
Louis Orlen	Apr. 3	Nissan 9	Abe Hecht	Apr. 19	Nissan 25
Maurice Phillips	Apr. 3	Nissan 9	Dora Schulman Kaufman	Apr. 19	Nissan 25
Sarah Benne	Apr. 4	Nissan 10	Myer Povolotsky	Apr. 19	Nissan 25
Charles Zallom	Apr. 4	Nissan 10	Seymour Weingarten	Apr. 19	Nissan 25
Richard Braiman	Apr. 5	Nissan 11	Harry Abelson	Apr. 21	Nissan 27
Charlotte Koltun	Apr. 5	Nissan 11	Elizabeth Daniel	Apr. 21	Nissan 27
Sadie Leitman	Apr. 5	Nissan 11	Marvin Foigelman	Apr. 21	Nissan 27
Nathan W. Stamler	Apr. 5	Nissan 11	Sarah Stiller	Apr. 21	Nissan 27
Betty Drogen	Apr. 6	Nissan 12	Molly Wasserman	Apr. 21	Nissan 27
Anna Fradin	Apr. 6	Nissan 12	Obbe Abelson	Apr. 22	Nissan 28
Katherine Gan	Apr. 6	Nissan 12	Bessie Goldberg	Apr. 22	Nissan 28
Samuel Garey	Apr. 6	Nissan 12	Ira Goldstein	Apr. 22	Nissan 28
Ruth Haymoff Comisar	Apr. 6	Nissan 12	Louis Kopen	Apr. 22	Nissan 28
David Levin	Apr. 6	Nissan 12	Esther Levy	Apr. 22	Nissan 28
Dora Lustik	Apr. 6	Nissan 12	Helen Rosen	Apr. 22	Nissan 28
Rose Snow	Apr. 6	Nissan 12	Sally Zeif	Apr. 22	Nissan 28
Abe L. Weinstein	Apr. 7	Nissan 13	Rebecca Goldsmith	Apr. 23	Nissan 29
Morris Fleisher	Apr. 8	Nissan 14	Esther Herzog	Apr. 23	Nissan 29
Isadore Karinsky	Apr. 8	Nissan 14	Fortunea Marzouk	Apr. 23	Nissan 29
Sylvia Kowal	Apr. 8	Nissan 14	Belle Schwartz	Apr. 23	Nissan 29
Harry Simon	Apr. 8	Nissan 14	Sidney Gallant	Apr. 24	Nissan 30
Harry Toker	Apr. 8	Nissan 14	Irvin Greenstine	Apr. 24	Nissan 30
Jonas Berkov	Apr. 9	Nissan 15	Leah Laffer	Apr. 24	Nissan 30
Rita Schnidman	Apr. 9	Nissan 15	Jennie Nobel	Apr. 24	Nissan 30
Matilda Greenstine Wolf	Apr. 9	Nissan 15	Joseph Tishkoff	Apr. 24	Nissan 30
Max Feldman	Apr. 11	Nissan 17	Ruben Wolinsky	Apr. 24	Nissan 30
Blanche Gordon	Apr. 11	Nissan 17	Molly Baker	Apr. 25	Iyar 1
Benjamin Lehrer	Apr. 11	Nissan 17	Benjamin Silverstein	Apr. 25	Iyar 1
Myron Rothschild	Apr. 11	Nissan 17	Betty Marcia Donsky	Apr. 26	Iyar 2
Mark Schiff	Apr. 11	Nissan 17	Ida Sanow	Apr. 26	Iyar 2
Fannie Bronstein	Apr. 12	Nissan 18	Belle Migdall	Apr. 27	Iyar 3
William C. Kruchten	Apr. 12	Nissan 18	Hyman Moldawsky Marlowe	Apr. 27	Iyar 3
Jennie Stein	Apr. 12	Nissan 18			
Allen Greenberg	Apr. 13	Nissan 19	Blanche Diamond	Apr. 28	Iyar 4
Joseph Marzouk	Apr. 13	Nissan 19	Michael J. Gordon	Apr. 28	Iyar 4
Harvey Louis Priceman	Apr. 13	Nissan 19	Fannie Hurwitz	Apr. 28	Iyar 4
Harold Rosenbaum	Apr. 13	Nissan 19	Fay Kiner	Apr. 28	Iyar 4
Samuel Applebaum	Apr. 15	Nissan 21	Ida Ritz	Apr. 28	Iyar 4
Selma Bachman	Apr. 16	Nissan 22	Sadie Schulman	Apr. 28	Iyar 4
Ruth Drexler	Apr. 16	Nissan 22	Natalie Rosen Hayman	Apr. 29	Iyar 5
Eli Caplin	Apr. 17	Nissan 23	Dorothy Moscovitz	Apr. 30	Iyar 6
Samuel Chait	Apr. 17	Nissan 23			



ALENT - BAKER
MONUMENTS
 IN-HOME CONSULTATIONS
385-1006
Lynn Baker Alent

Minimum Donations	
Greeting Card Mailed Out	\$7.50 ea.
3 or more Memorial or Greeting Cards	\$6.00 ea. (\$18.00)
Tree of Life Leaf	\$72.00
Siddur Sim Shalom	\$30.00
HH Prayer Book	\$25.00
Etz Hayim	\$75.00
Basic Kiddush	\$72.00
Cholent Sponsor	\$18.00
Wine/Challah Sponsor	\$18.00
Memorial Plaque Non Member	\$270.00 \$414.00
Cemetery Plots In Riverside Member	\$600.00
Non-Member	\$800.00



PARSKY-LEVY
MEMORIAL CHAPEL
 21 Lincoln Avenue • Pittsford, NY
 585-381-2170 • www.parskylevy.com

Send a Card to a friend or loved one!

Make checks payable to: Temple Beth David, 3200 St. Paul Blvd., Rochester, NY 14617

Date _____ Amount enclosed \$ _____ (minimum donation \$7.50)

Address:

From: _____ To: _____

Reason for Card/Message:

- Fund : D. Solomon M. Fishman Rabbi Skopitz Youth Fund Temple Residence
 Mitzvah/Kiddush TBD Capital Improvement Library H. Kraus/Adult Ed.
 Torah Repair Fund USY/Kadima Shiva Chevra Rabbi Discretionary's Fund

Minimum Donation is \$7.50. If no fund is specified, David Solomon Building Fund will be named.

GILBERT ROSENBAUM FUND DONATIONS AND CARD REQUESTS ARE HANDLED SEPARATELY:

Please send card requests and donations to: Richard Steinfeld, 144 Dunbarton Dr., Rochester, NY 14618

Purchase Sisterhood Torah Fund Cards online at:
www.jtsa.edu/giving

Temple Beth David
3200 St. Paul Blvd.
Rochester, NY 14617

Non-Profit Org.
U.S. Postage
PAID
Rochester, NY
Permit No. 1111

An Affiliate of the United Synagogue of Conservative Judaism



BRIGHTON MEMORIAL CHAPEL, INC.

Rochester's Only **100%**
Locally Owned
Jewish Funeral Home
585-427-8520
Jarrod M. Krieger, Owner

Graveside, Temple or Chapel Services
Compare facilities, locations and prices...
There is **NO COMPARISON!**
3325 Winton Road South
www.brightonmemorialchapel.com

Executive Officers:

President: Ron Kraus

Vice Presidents:

- **Administration:** Bill Gertzog
- **Finance:** Sy Zivan
- **Ritual:** Gary Cohen
- **Education:** Sue Eckhaus
- **Building:** Michael Walker
- **Recording Secretary:** Susan Drexler

Temple Funds:

- Capital Improvement Fund
- David Solomon Memorial Building Fund
- Gilbert Rosenbaum Fund
- Herb Kraus Adult Education Fund
- Library Fund
- Mitzvah Kiddush Fund
- Marsha Fishman Memorial Education Fund
- Children's Shabbaton Fund
- Rabbi Skopitz Memorial Youth Fund
- Rabbi's Discretionary Fund
- Torah Repair Fund
- Shiva Chevra Fund
- USY/Kadima Fund
- Temple Residence Fund

Temple Activity Chairs:

Judaica Shop: Linda Servetnick

Men's Club: Jonathan Papkin

Sisterhood: Florence Phillips

Bikkur Cholim: Karen Zivan

Bulletin Folding: Mrs. Sylvia Stiller

Book of Remembrance: C. Halpern & D. Steinfeld

Bingo: Sylvia Roth

Publicity: Helen Kashtan

Shiva Chevra: Florence Phillips

USY/Kadima Advisor: Sue Kruchten

Website Coordinator: Mike Berke

Temple Office: Maria Dewhirst 266-3223

Temple Website: www.templebethdavid.uscjhost.net/

Sale of Ḥametz 2009

It is forbidden for a Jew to have any *ḥametz* in his possession during the Passover Holiday. If one has any *ḥametz* that cannot be consumed or destroyed before Passover, then it should be set aside in a relatively inaccessible place and sold to a non-Jew. This sale must be done in accordance with Halakhah and is therefore usually done by the Rabbi. You must authorize the Rabbi to prepare a bill of sale and to transfer ownership of your *ḥametz* to a non-Jew. If you cannot come personally to the Rabbi to do this, you can avail yourself of the form below and send it to the Rabbi, c/o Temple Beth David, to **arrive** no later than Tuesday, April 7, 2009.

Rabbi Geoffrey Goldberg

Date: _____

Temple Beth David
3200 St. Paul Blvd.
Rochester, NY 14617

I (We) _____ hereby authorize Rabbi Geoffrey Goldberg to sell all *ḥametz* products that are now in my (our) possession and on my (our) premises on Wednesday morning, April 8th, 2009 wherever these may be: at my home, place of business or elsewhere. Rabbi Goldberg is to act as agent in my (our) behalf for the complete transaction of the sale in accordance with the requirements of Jewish law.

Signature(s): _____

Address (Home): _____

Address (Business): _____